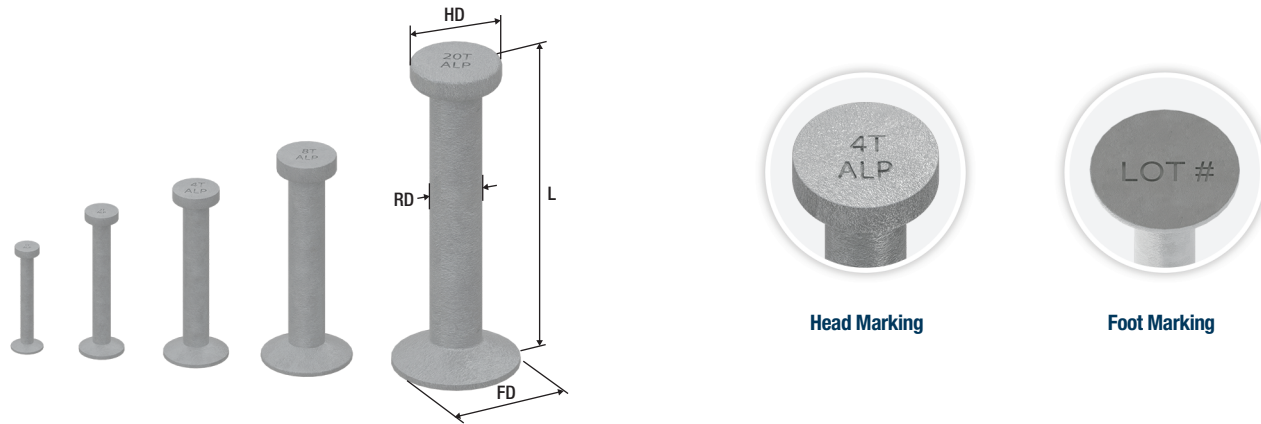


ALP® LIFTING PIN ANCHORS

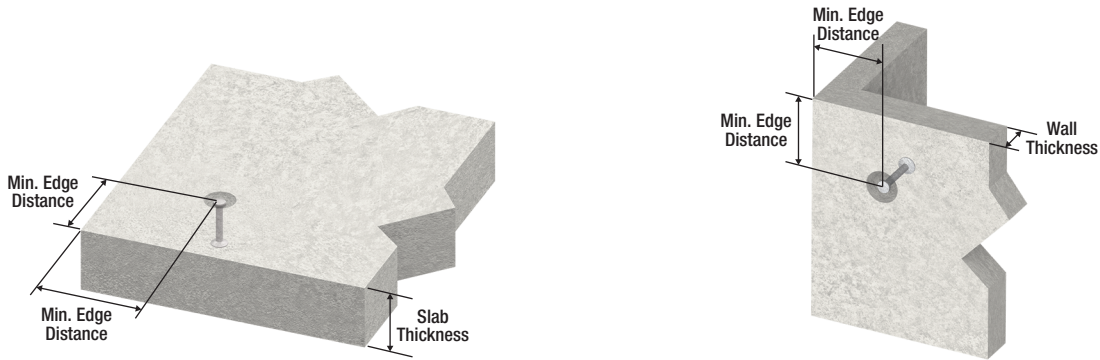
All ALP Lifting Pin Anchors are manufactured using high strength steel with forged ends. The head design provides uniform engagement with the Lifting Eye, and the large forged anchor foot is embedded in the concrete to create the lifting capacity. **Standard finish is hot-dipped galvanized.** *Safe Working Loads (SWL) displayed in the below chart apply to loading in any direction.*



DIMENSIONS AND CAPACITIES

Part #	Ton	L	HD	RD	FD	Head Marking	Ultimate Mechanical in Tension (lbs)	Weight (lbs)	Qty/Bag	Qty/Crate
LPA1T238G	1T	2-3/8"	3/4"	3/8"	1"	1T ALP	8,000	0.11	300	15,000
LPA1T258G	1T	2-5/8"	3/4"	3/8"	1"	1T ALP	8,000	0.14	300	15,000
LPA1T338G	1T	3-3/8"	3/4"	3/8"	1"	1T ALP	8,000	0.16	200	5,000
LPA1T434G	1T	4-3/4"	3/4"	3/8"	1"	1T ALP	8,000	0.22	100	5,000
LPA2T234G	2T	2-3/4"	1"	9/16"	1-3/8"	2T ALP	16,000	0.31	100	5,000
LPA2T338G	2T	3-3/8"	1"	9/16"	1-3/8"	2T ALP	16,000	0.35	100	5,500
LPA2T434G	2T	4-3/4"	1"	9/16"	1-3/8"	2T ALP	16,000	0.43	100	5,000
LPA2T512G	2T	5-1/2"	1"	9/16"	1-3/8"	2T ALP	16,000	0.48	50	4,500
LPA2T634G	2T	6-3/4"	1"	9/16"	1-3/8"	2T ALP	16,000	0.57	100	4,000
LPA2T11G	2T	11"	1"	9/16"	1-3/8"	2T ALP	16,000	0.85	30	1,500
LPA4T212G	4T	2-1/2"	1-7/16"	3/4"	2"	4T ALP	32,000	0.67	50	3,000
LPA4T3G	4T	3"	1-7/16"	3/4"	2"	4T ALP	32,000	0.74	50	3,000
LPA4T312G	4T	3-1/2"	1-7/16"	3/4"	2"	4T ALP	32,000	0.77	50	2,500
LPA4T334G	4T	3-3/4"	1-7/16"	3/4"	2"	4T ALP	32,000	0.82	50	2,500
LPA4T414G	4T	4-1/4"	1-7/16"	3/4"	2"	4T ALP	32,000	0.89	50	2,500
LPA4T434G	4T	4-3/4"	1-7/16"	3/4"	2"	4T ALP	32,000	0.94	25	2,500
LPA4T512G	4T	5-1/2"	1-7/16"	3/4"	2"	4T ALP	32,000	1.05	50	2,000
LPA4T718G	4T	7-1/8"	1-7/16"	3/4"	2"	4T ALP	32,000	1.25	25	1,600
LPA4T912G	4T	9-1/2"	1-7/16"	3/4"	2"	4T ALP	32,000	1.60	20	1,500
LPA8T434G	8T	4-3/4"	1-13/16"	1-1/8"	2-3/4"	8T ALP	64,000	1.96	20	1,000
LPA8T6G	8T	6"	1-13/16"	1-1/8"	2-3/4"	8T ALP	64,000	2.31	20	1,000
LPA8T634G	8T	6-3/4"	1-13/16"	1-1/8"	2-3/4"	8T ALP	64,000	2.48	20	1,000
LPA8T834G	8T	8-3/4"	1-13/16"	1-1/8"	2-3/4"	8T ALP	64,000	3.06	15	750
LPA8T10G	8T	10"	1-13/16"	1-1/8"	2-3/4"	8T ALP	64,000	3.33	10	500
LPA8T1338G	8T	13-3/8"	1-13/16"	1-1/8"	2-3/4"	8T ALP	64,000	4.26	N/A	450
LPA8T2634G	8T	26-3/4"	1-13/16"	1-1/8"	2-3/4"	8T ALP	64,000	7.83	N/A	270
LPA16T778G	16T	7-7/8"	2-3/4"	1-9/16"	3-7/8"	16T ALP	128,000	6.59	N/A	300
LPA20T10G	20T	10"	2-3/4"	1-9/16"	3-7/8"	20T ALP	160,000	7.82	N/A	200
LPA20T16G	20T	16"	2-3/4"	1-9/16"	3-7/8"	20T ALP	160,000	11.00	N/A	200
LPA20T1934G	20T	19-3/4"	2-3/4"	1-9/16"	3-7/8"	20T ALP	160,000	13.35	N/A	160

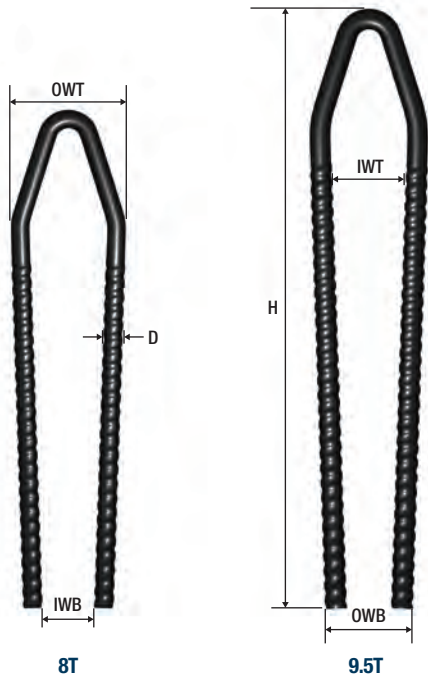
ALP® LIFTING PIN ANCHORS CAPACITY IN CONCRETE



Capacity in Concrete, 4:1 SWL								
Part #	Ton	L	1500 PSI (lbs)	2500 PSI (lbs)	3500 PSI (lbs)	5000 PSI (lbs)	Min. Edge Distances	
							Tension	Shear
LPA1T238G	1T	2-3/8"	1,045	1,350	1,600	1,910	8"	12"
LPA1T258G	1T	2-5/8"	1,160	1,500	1,770	2,000	8"	12"
LPA1T338G	1T	3-3/8"	1,900	2,000	2,000	2,000	8"	12"
LPA1T434G	1T	4-3/4"	2,000	2,000	2,000	2,000	10"	12"
LPA2T234G	2T	2-3/4"	1,375	1,775	2,100	2,510	8"	12"
LPA2T338G	2T	3-3/8"	2,000	2,700	3,250	3,900	8"	12"
LPA2T434G	2T	4-3/4"	3,250	4,000	4,000	4,000	10"	15"
LPA2T512G	2T	5-1/2"	4,000	4,000	4,000	4,000	11"	17"
LPA2T634G	2T	6-3/4"	4,000	4,000	4,000	4,000	11"	17"
LPA2T11G	2T	11"	4,000	4,000	4,000	4,000	11"	17"
LPA4T212G	4T	2-1/2"	1,400	1,810	2,150	2,560	8"	12"
LPA4T3G	4T	3"	1,960	2,530	2,990	3,570	8"	12"
LPA4T312G	4T	3-1/2"	2,275	2,935	3,475	4,150	8"	12"
LPA4T334G	4T	3-3/4"	2,550	3,250	3,950	4,700	8"	12"
LPA4T414G	4T	4-1/4"	3,000	3,850	4,550	5,450	9"	13"
LPA4T434G	4T	4-3/4"	3,650	4,700	5,600	6,700	10"	15"
LPA4T512G	4T	5-1/2"	4,550	5,850	6,950	8,000	11"	17"
LPA4T718G	4T	7-1/8"	6,900	8,000	8,000	8,000	15"	22"
LPA4T912G	4T	9-1/2"	8,000	8,000	8,000	8,000	17"	26"
LPA8T434G	8T	4-3/4"	4,050	5,200	6,200	7,450	10"	15"
LPA8T6G	8T	6"	5,805	7,495	8,870	10,600	12"	18"
LPA8T634G	8T	6-3/4"	7,000	9,000	10,750	12,850	14"	21"
LPA8T834G	8T	8-3/4"	12,940	16,000	16,000	16,000	18"	27"
LPA8T10G	8T	10"	14,790	16,000	16,000	16,000	20"	30"
LPA8T1338G	8T	13-3/8"	16,000	16,000	16,000	16,000	27"	41"
LPA8T2634G	8T	26-3/4"	16,000	16,000	16,000	16,000	27"	41"
LPA16T778G	16T	7-7/8"	7,000	9,000	10,750	12,850	14"	21"
LPA20T10G	20T	10"	11,750	15,150	17,950	21,500	20"	30"
LPA20T16G	20T	16"	18,920	24,425	28,900	34,540	24"	36"
LPA20T1934G	20T	19-3/4"	26,000	33,800	40,000	40,000	40"	48"

- Shaded area indicates the capacity in concrete is limited by the mechanical capacity of the anchor
- Table is based on normal weight concrete (145-150PCF)
 - Minimum anchor spacing is 2x the published edge distance
 - Minimal reinforcement required to achieve above load values
 - Capacities in radius sections are reduced - consult ALP Supply® Tech Support
 - Above capacities are based upon mechanical & concrete testing, calculations and available industry data
 - Loads are listed at varying concrete strengths (PSI) to accommodate varying conditions at time of loading
 - Proper rigging and all lifting angle load magnifications are to be used to determine actual applied loads
 - To achieve published values, a minimum concrete cover of 1" below the foot of anchor is required
 - For insulated wall panel and slab applications, the foot of the anchor can sit on or be recessed by the depth of the foot into the insulation, as long as full concrete bearing on the top of the foot is achieved
 - For lifting and handling of thin slabs, design needs to ensure slab is properly reinforced to prevent flexural stresses from cracking slab

QUIKLIFT® SPIRAL ANCHORS® - DOUBLE TEE APPLICATION



The QuikLift Spiral Anchor is designed for lifting of thin wall precast elements and double tees. The anchors are recessed, which eliminates job site costs of removal associated with strand lifters. The round bar also ensures a more even engagement of the ring clutch to the anchor in all loading directions (compared to square anchors). The Spiral Anchor uses standard QuikLift 8T-12T (QL003) Ring Clutch.

Impact resistant, even in freezing temperatures.

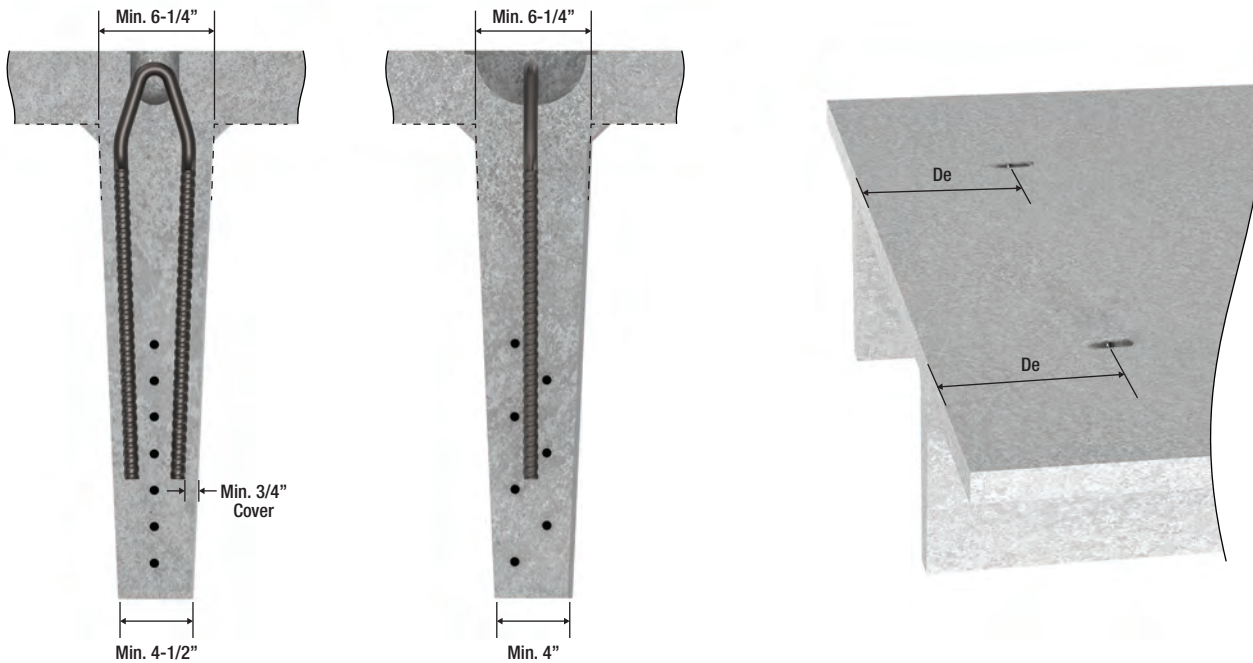
Patent No. US 11,549,273B2 | CA 3,012,353 | EP 3,441,542 B1 | 60 2018 018 274.8.

DIMENSIONS AND CAPACITIES FOR DOUBLE TEE

Part #	Ton	Ring Clutch System	H	OWT	OWB	IWT	IWB	D	Ultimate Mechanical in Tension (lbs)	Weight (lbs)	Qty/ Crate	Capacity in Concrete 4:1 SWL		
												De - Minimum Distance from End	Tension (lbs) at 3,300 PSI	Tension (lbs) at 3,700 PSI
QLSA8T19	8T	8T-12T (QL003)	19"	4-7/16"	3-1/2"	3"	2"	11/16"	64,000	4.32	500	24"	15,000	16,000
QLSA912T23	9.5T	8T-12T (QL003)	23"	4-9/16"	3-7/16"	3"	1-3/4"	13/16"	76,000	6.33	350	24"	18,000	19,000

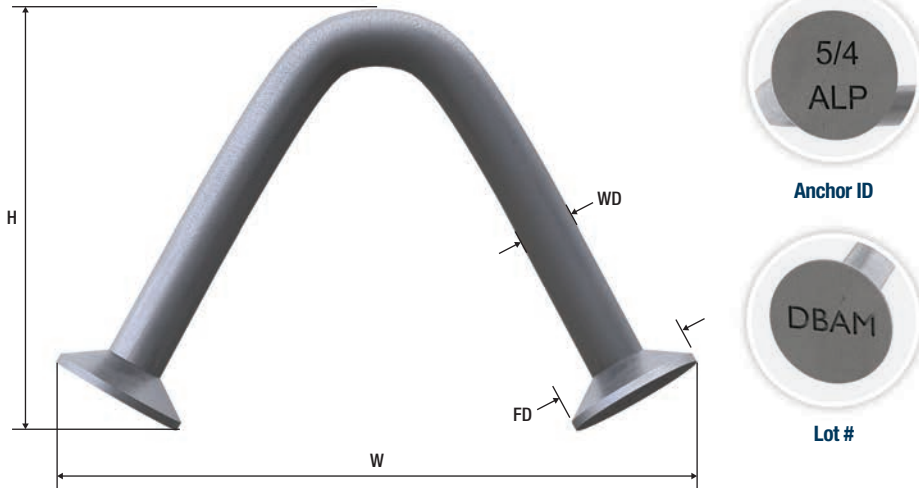
• Table is based on 145 PCF concrete

• Above capacities are based upon mechanical testing and concrete testing.



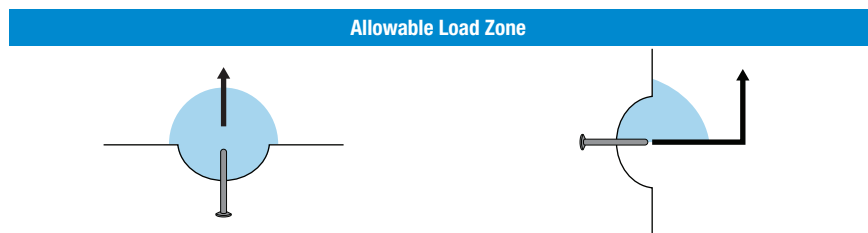
ALP® UTILITY LIFT™ ANCHORS - .444"/.671" DIAMETERS

Anchors available in two wire diameters: .444" and .671". **Standard finish is hot-dipped galvanized.**



DIMENSIONS

Part #	WD	Anchor ID	Typical Slab Thickness	W	H	FD	Weight (lbs)	Qty/Bag	Qty/Crate
LUA44G	.444	4/4	4"	5-1/4"	3-1/8"	15/16"	0.40	100	5,000
LUA54G	.444	5/4	5"	6"	3-3/4"	15/16"	0.49	30	4,500
LUA64G	.444	6/4	6"	7-1/4"	4-3/4"	15/16"	0.58	25	4,000
LUA56G	.671	5/6	5"	6-1/4"	3-3/4"	1-5/8"	1.09	25	2,000
LUA66G	.671	6/6	6"	7-1/2"	4-3/4"	1-5/8"	1.27	25	1,600
LUA86G	.671	8/6	8"	9-3/4"	6-3/4"	1-5/8"	1.73	25	1,200



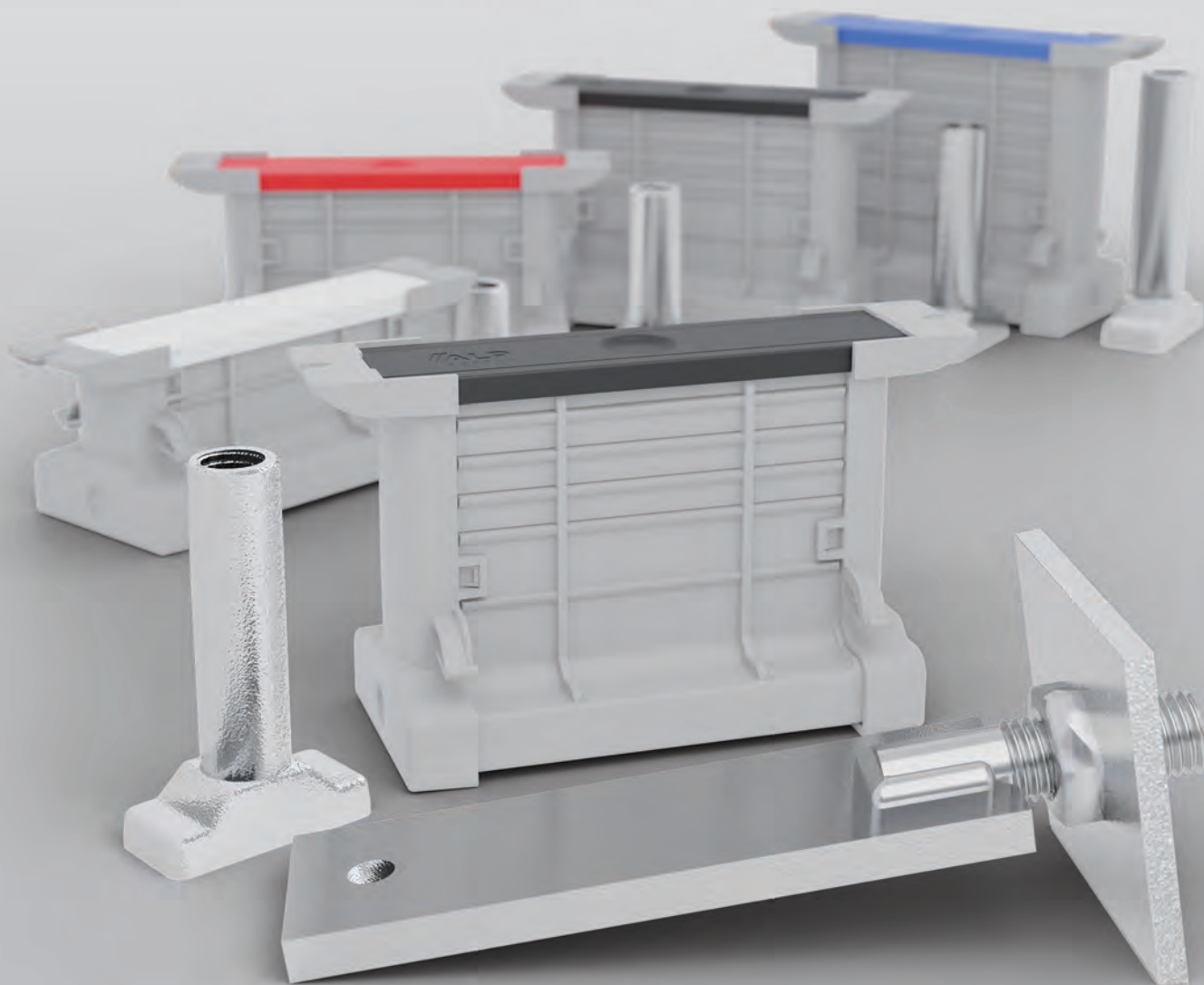
CAPACITIES

Part #	Slab Min. Thickness	Edge Distance	4:1 SWL at 90° Tension (lbs)	4:1 SWL at 90° Shear (lbs)
LUA44G	4"	9"	3,200	5,800
LUA54G	5"	10"	3,860	7,710
LUA64G	6"	12"	4,460	9,460
LUA56G	5"	10"	4,560	8,430
LUA66G	6"	12"	7,320	15,780
LUA86G	8"	16"	10,830	18,850

- Safe Working Load provides a factor of safety of approximately 4:1.
- Table is based on 4,000 psi and 145 PCF concrete.
- Published load capacity cannot be adjusted for higher concrete strength.

- Above capacities are based upon mechanical testing and available industry data.
- For use as a pulling iron, higher allowable loads can be determined by the design engineer by selecting the appropriate factor of safety.

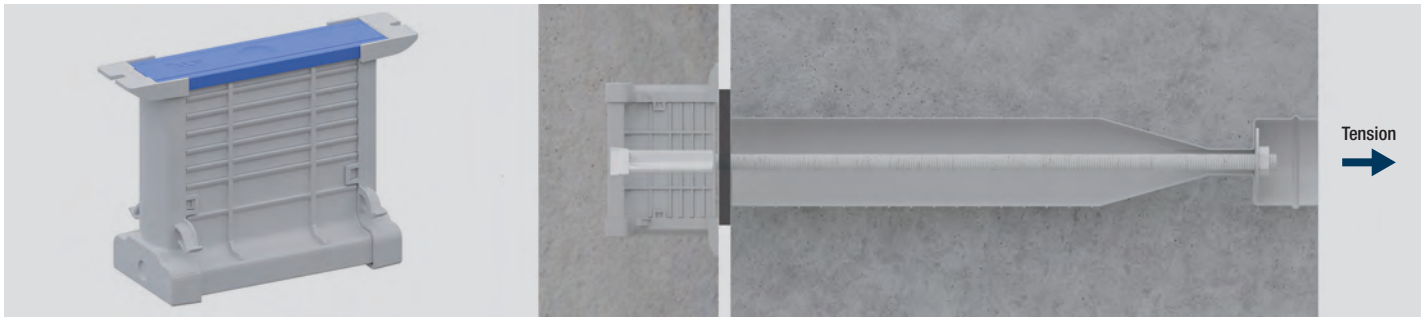
TECH SLOT™ INSERTS



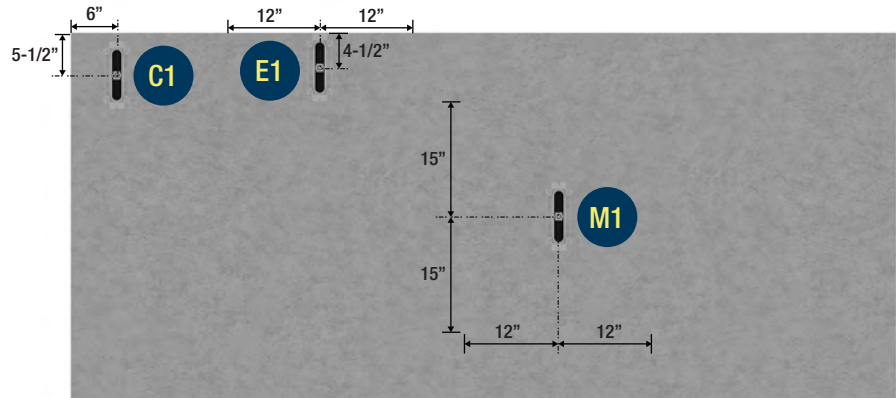
PATENTED

US Patent No: US 10,024,051 B2
Canada Patent No: CA 3,003,657

TSI66 - ALP® TECH SLOT INSERTS (TENSION)



Dimensions shown are minimum edge distances for insert location and concrete breakout, which can be used in either vertical or horizontal orientations



CAPACITIES - TSI66 - 6" HEIGHT

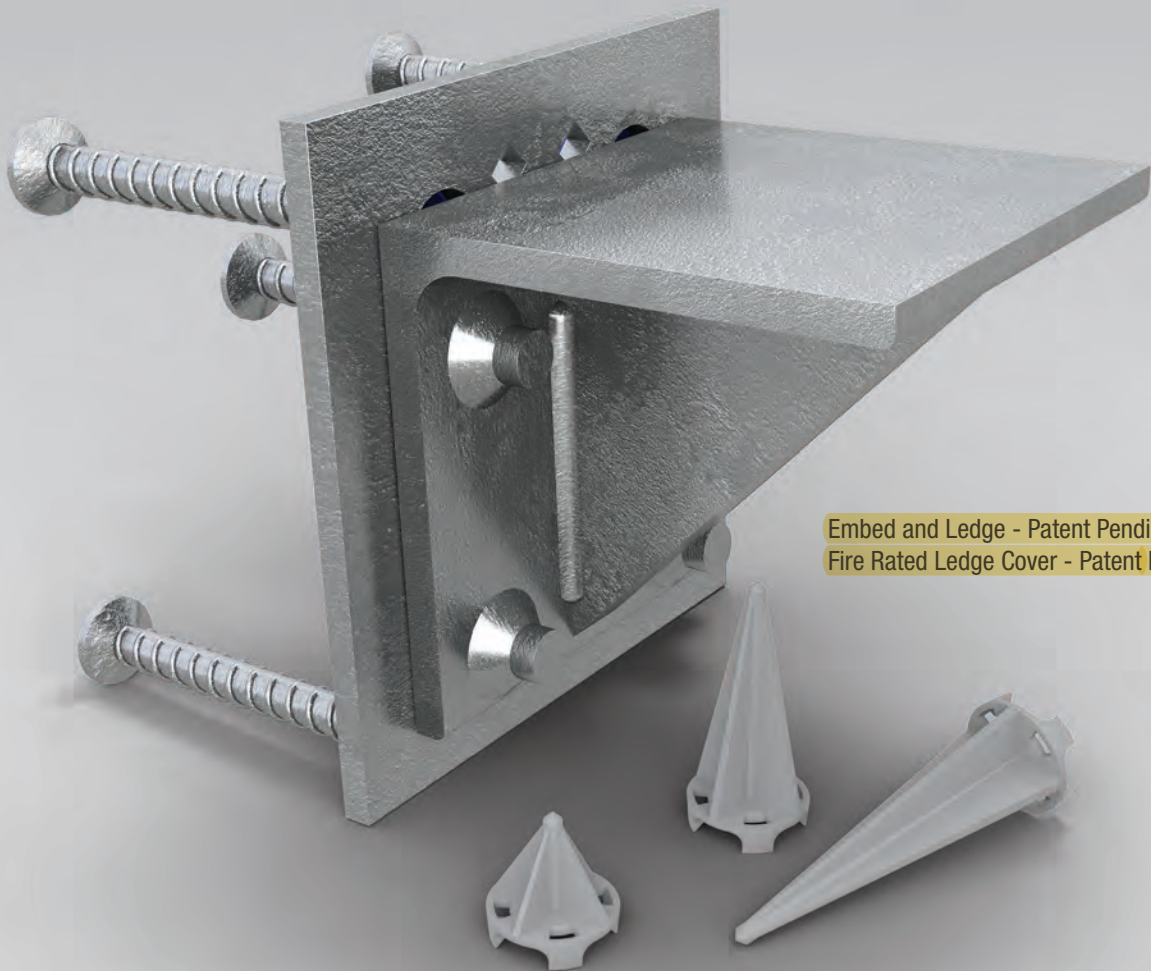
Insert Location	Required Reinforcement*	5,000 psi			6,000 psi			Max Capacity				# of Tests	Failure Mode
		Ultimate Avg. (lbs)	Ultimate Min. (lbs)	Std. Dev. (lbs)	Ultimate Avg. (lbs)	Ultimate Min. (lbs)	Std. Dev. (lbs)	psi	Ultimate Avg. (lbs)	Ultimate Min. (lbs)	Std. Dev. (lbs)		
M1	None	29,510	27,492	1,852	32,327	30,116	2,029	6,000	32,327	30,116	2,029	3	MSC
E1	None	18,259	17,294	877	20,001	18,944	960	6,941	21,513	20,376	1,033	3	ESC
C1	#4 U Bar	18,419	15,917	3,096	20,177	17,436	3,392	6,006	20,187	17,445	3,393	3	CSC

*Refer to Reinforcement Detail page for more information

- 1/4" x 3" x 3" (minimum) washer required for published shear capacities and compression applications
- Insert Capacity is based upon T-Nut location that yields the lowest capacity for the application.
- Minimum solid panel thickness is 5". For insulated wall panels, insert can sit directly on insulation with a minimum 4" wythe thickness
- Published values based upon unreinforced concrete, unless noted otherwise
- Tension Values for M1 can be used in applications that sits directly on styrofoam or minimum 1" clear concrete below
- All load values, other than M1, require minimum 1" clear concrete below insert bottom
- Other testing values may be available upon request

QUIK CORBEL™

S Y S T E M



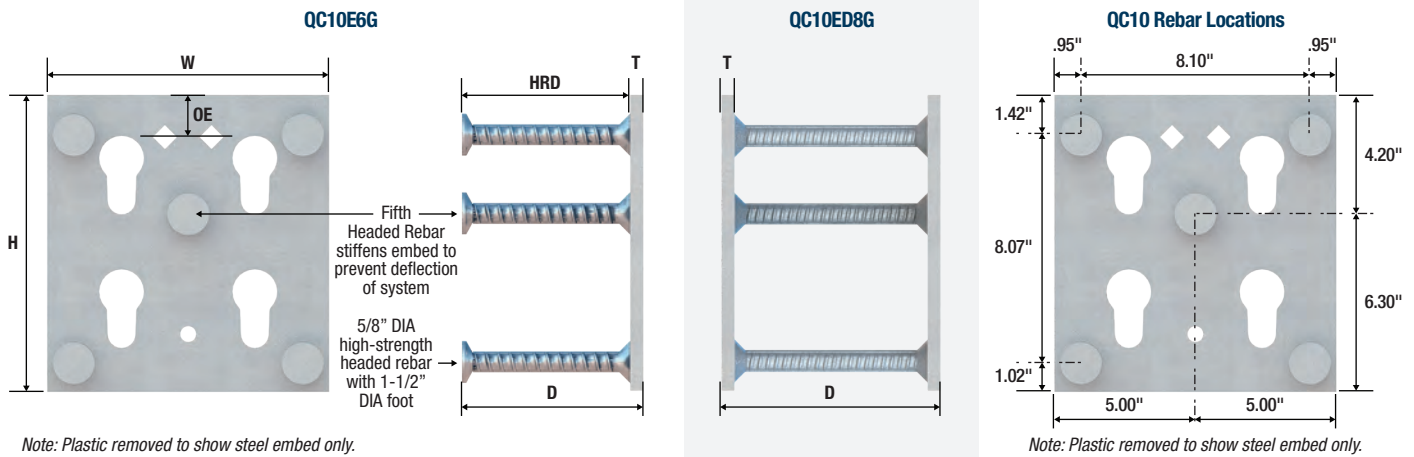
Embed and Ledge - Patent Pending

Fire Rated Ledge Cover - Patent Pending

ALP® QUIK CORBEL™ SYSTEM

The Quik Corbel System is designed to improve efficiencies for precast elements that require a bearing ledge. The two-piece design, consisting of an embed and ledge, eliminates the need for specialty forms or secondary cast haunches. The Quik Corbel embed is cast flush to the concrete surface, and the ledge is typically attached to the embed at the job site. Each embed and ledge are marked with lot numbers for material and manufacturing traceability.

QUIK CORBEL - QC10 EMBED

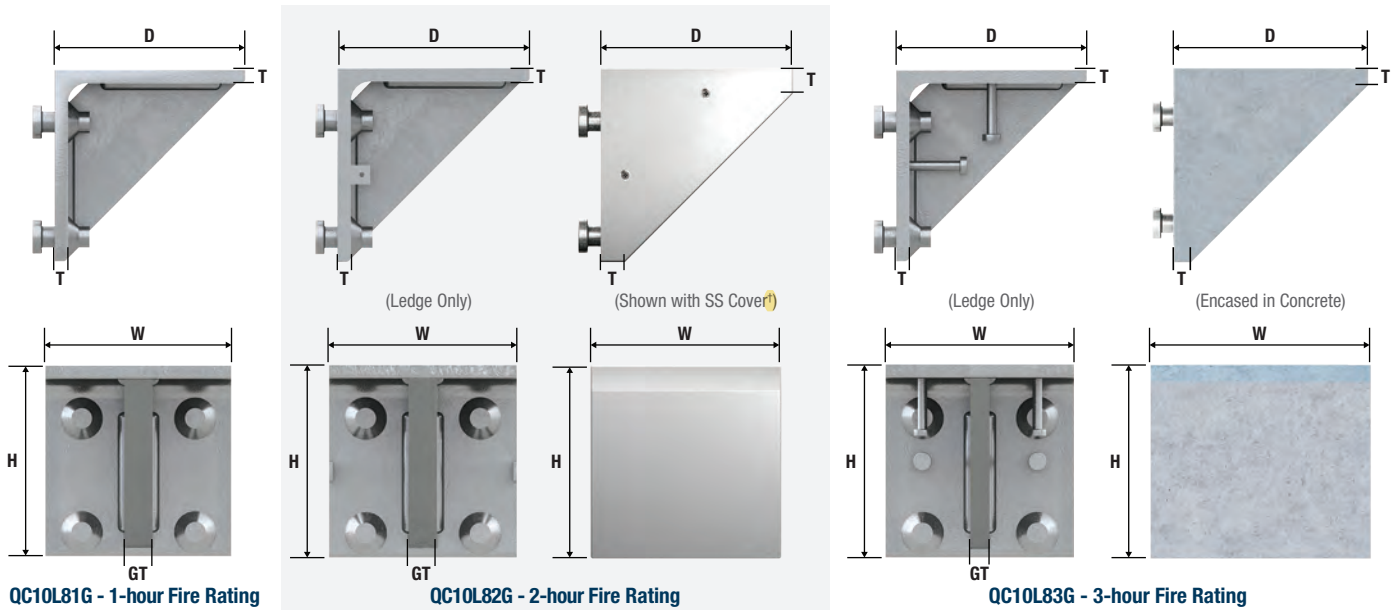


DIMENSIONS - QC10 EMBED

Part #	Description	Finish	W	H	T	D	HRD	OE*	Weight/Piece (lbs)	Qty/Crate
QC10E6G	QC10 Embed, 6"	HDG	10"	10-1/2"	15/32"	6-15/32"	6"	1-1/2"	15.60	108
QC10ED8G	QC10 Double Sided Embed, 8" panel	HDG	10"	10-1/2"	15/32"	8"	N/A	1-1/2"	28.30	64

*OE is to centerline of diamonds

QUIK CORBEL - QC10 LEDGE



DIMENSIONS - QC10 LEDGE

Part #	Description	Finish	Fire Rating	W	H	D	T	GT	Weight/Piece (lbs)	Qty/Crate
QC10L81G	QC10 Ledge	HDG	1 Hour	7-3/4"	7-7/8"	7-7/8"	9/16"	1-3/16"	28.90	80
	QC10 Ledge (with SS Cover removed)	HDG	N/A	7-3/4"	7-7/8"	7-7/8"	9/16"		N/A	N/A
QC10L82G*	QC10 Ledge with SS Cover	-	2 Hour	7-7/8"	7-15/16"	7-15/16"	1"	1-3/16"	30.50	80
QC10L83G**	QC10 Ledge with studs (ledge only)	HDG	N/A	7-3/4"	7-7/8"	7-7/8"	9/16"		26.40	80
	QC10 Ledge with studs (encased in concrete)	-	3 Hour	9-7/8"	8-5/8"	8-5/8"	3/4"	3/4"	56.00	N/A

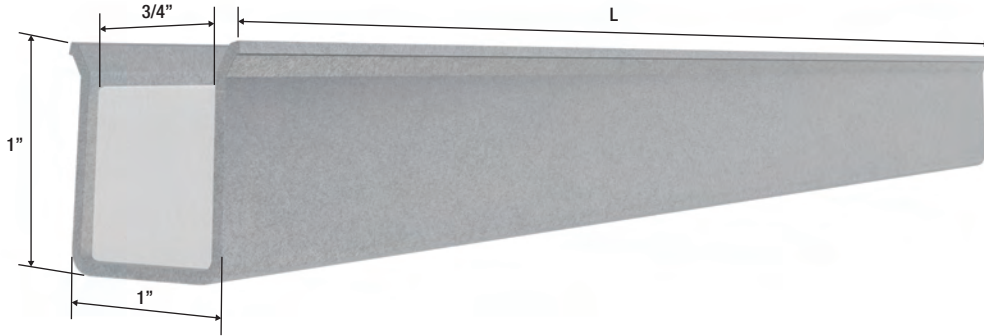
*QC10L82G is only sold pre-assembled with fire resistant insulation and stainless steel cover.

**QC10L83G must be encased in concrete by precaster as noted in illustration, using 145 PCF, 5,000 PSI concrete to achieve 3-hour fire rating.

†Fire rated ledge cover is patent pending.

DOVETAIL ANCHOR SLOT - FOAM FILLED

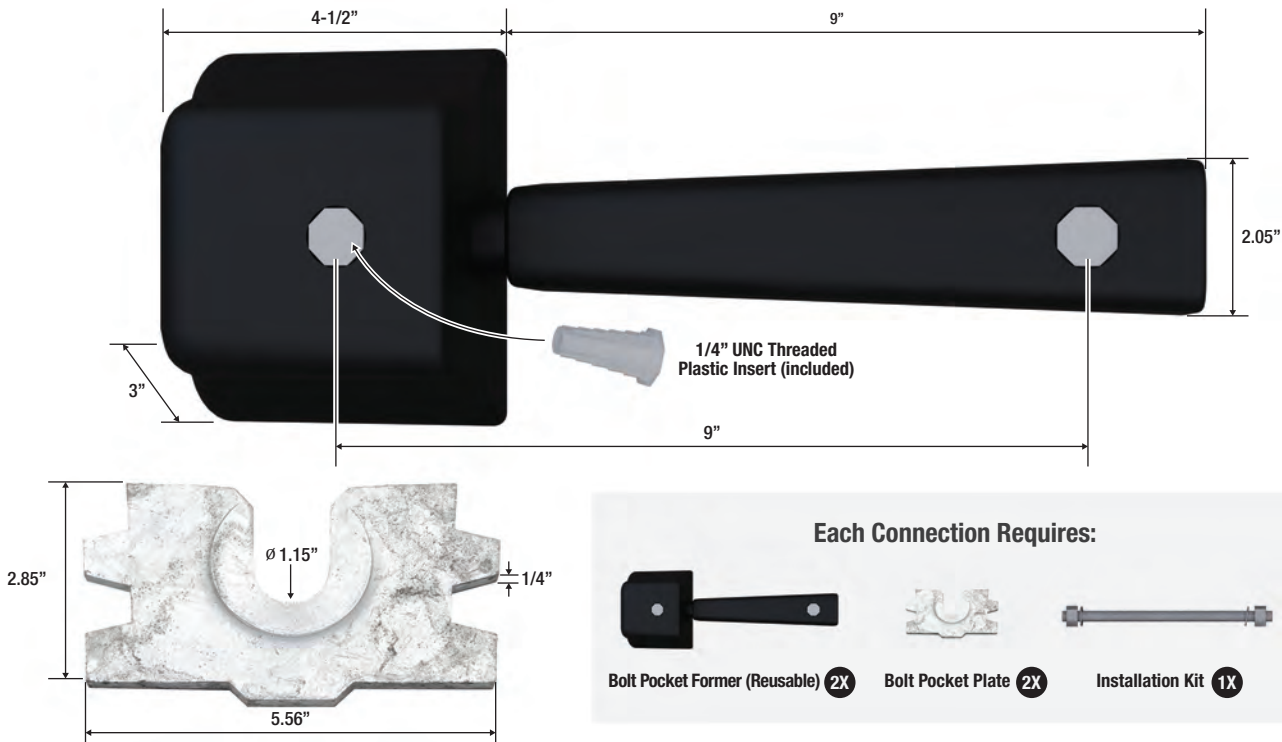
Dovetail Anchor Slots come in standard 26 gauge, mill galvanized finish in 10 ft lengths. Custom gauges and finishes available upon request.



Part #	Gauge	Finish	L	Feet/Bundle
MCDAS26	26	Mill Galvanized	10'	250'

PA INSERT® BOLT POCKET FORMER SYSTEM

The PA Insert Bolt Pocket Former System is used to bolt two underground precast structures together. Bolt Pocket Plates are cast into the concrete to eliminate spalling. The former holds the steel plate in place during the production process, creates a void in the concrete and is removed after product is stripped from the form. Threaded Insert Locators can be used to hold the former in place, magnetic formers are also available. Installation kits are used after precast products are installed at the job site. **See www.alpsupply.com for more information.**



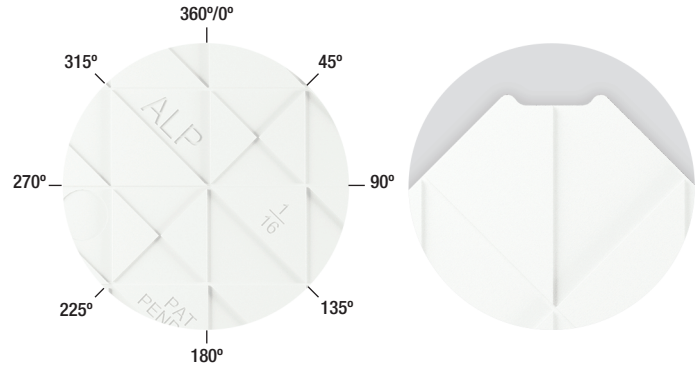
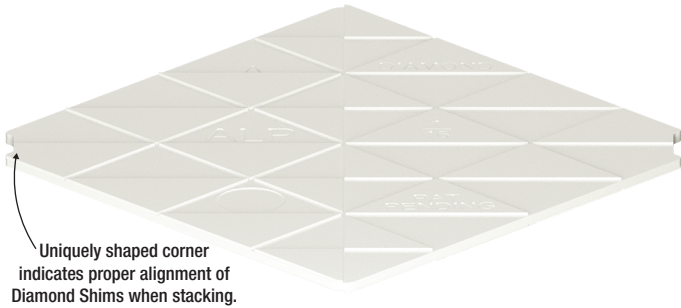
Part #	Description	Weight (lbs)
PABPF2	Bolt Pocket Former (Reusable)	1.15
PABPF2M	Bolt Pocket Former - Magnetic	1.55
PABPP	Bolt Pocket Plate, HDG	0.95
PABPIK	Installation Kit, Plated	4.90

ALP® DIAMOND SHIMS®

The ALP® Diamond Shims have distinct triangle shapes that interlock, preventing horizontal movement 360° along a compass axis which provides stability and strength when leveling precast elements. **Patent No. US D957,693 S and US 11,927,048 B1.**

Plastic injection molded from Virgin High Impact Polystyrene (HIPS) material, our Diamond Shims are resilient while providing high load capacities.

- 8,000 psi minimum yield strength in compression
- Made from non-corrosive material
- Product will not stain concrete
- Manufactured with lot number traceability
- **Shims stacked greater than 1-3/16" in height will have a reduced capacity and are not recommended.**

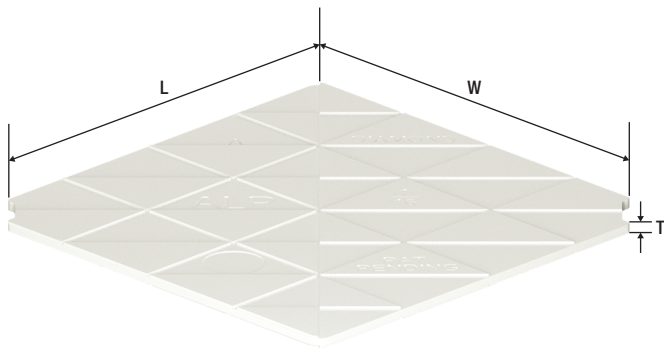


Interlocking System

Corner Close-up

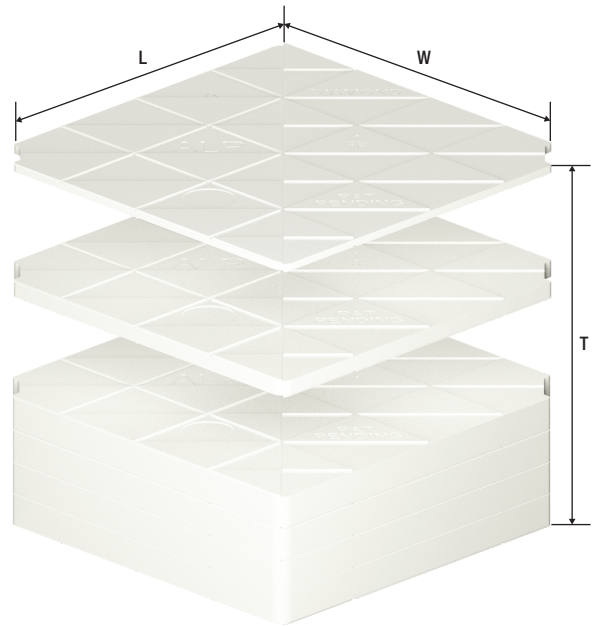
Diamond Shims - Individual Shims

Sold in 1/4", 1/8", and 1/16" thickness, conveniently packaged in stacks, held together with a rubber band for ease of handling.



Diamond Shims - Shim Packs

Shim Packs come preassembled 1-3/16" tall, held together with a rubber band.



DIMENSIONS - INDIVIDUAL SHIMS

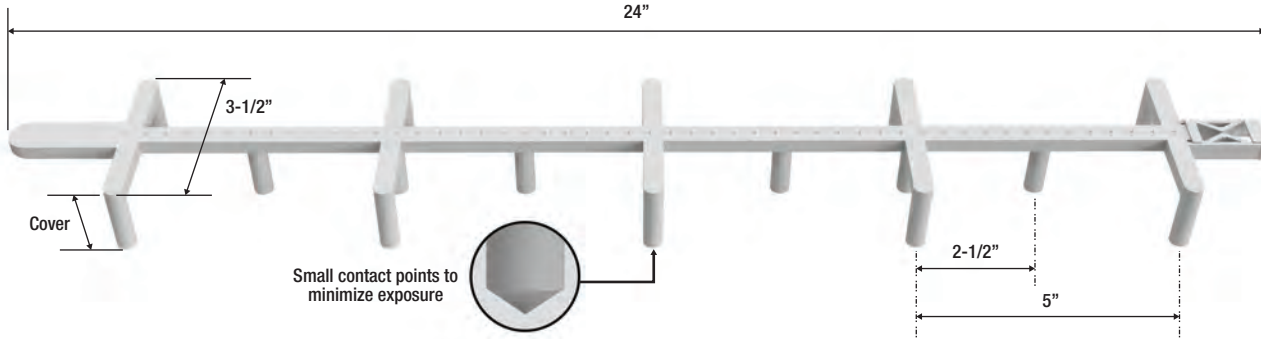
Part #	W	L	T	# of shims per stack	Qty/Ctn
PSDS0303116	3"	3"	1/16"	35	1,680
PSDS030318	3"	3"	1/8"	20	960
PSDS030314	3"	3"	1/4"	10	480
PSDS0606116	6"	6"	1/16"	35	420
PSDS060618	6"	6"	1/8"	20	240
PSDS060614	6"	6"	1/4"	10	120

DIMENSIONS - SHIM PACKS

Part #	W	L	T	Shim Pack Configuration	Packs/Ctn
PSDSP03031316	3"	3"	1-3/16"	(4) 1/4", (1) 1/8", (1) 1/16"	96
PSDSP06061316	6"	6"	1-3/16"	(4) 1/4", (1) 1/8", (1) 1/16"	24

STANDARD PLASTIC SLAB BOLSTER

- 100% plastic construction, eliminating exposed metal that can rust
- A wide T-back backbone beam for strength and stability
- Locking clip allows Slab Bolsters to be clipped together
- All Slab Bolsters come standard in Light Gray
- Bar stops on the top to help prevent bars from moving



Part #	Cover/Size	Color	Feet /Ctn
PWSBS034	3/4"	Light Gray	356'
PWSBS1	1"	Light Gray	356'
PWSBS114	1-1/4"	Light Gray	300'
PWSBS112	1-1/2"	Light Gray	280'
PWSBS134	1-3/4"	Light Gray	248'
PWSBS2	2"	Light Gray	224'
PWSBS214	2-1/4"	Light Gray	180'
PWSBS212	2-1/2"	Light Gray	180'
PWSBS3	3"	Light Gray	148'
PWSBS312	3-1/2"	Light Gray	140'
PWSBS4	4"	Light Gray	130'
PWSBS412	4-1/2"	Light Gray	100'

PLASTIC SLAB BOLSTER UPPER PLATE*

All plastic construction keeps rust from forming on the surface of the concrete. Snaps onto Standard Slab Bolster to convert it into an Upper Slab Bolster. Standard length is 24".

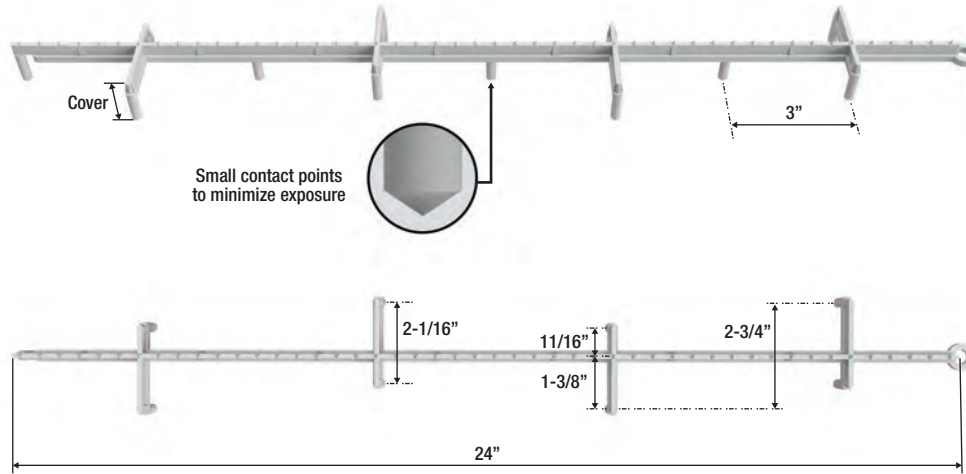


Part #	Color	Feet /Ctn
PWSBSUP	Light Gray	168'

*Works with Standard Slab Bolster only

LIGHT DUTY PLASTIC SLAB BOLSTER

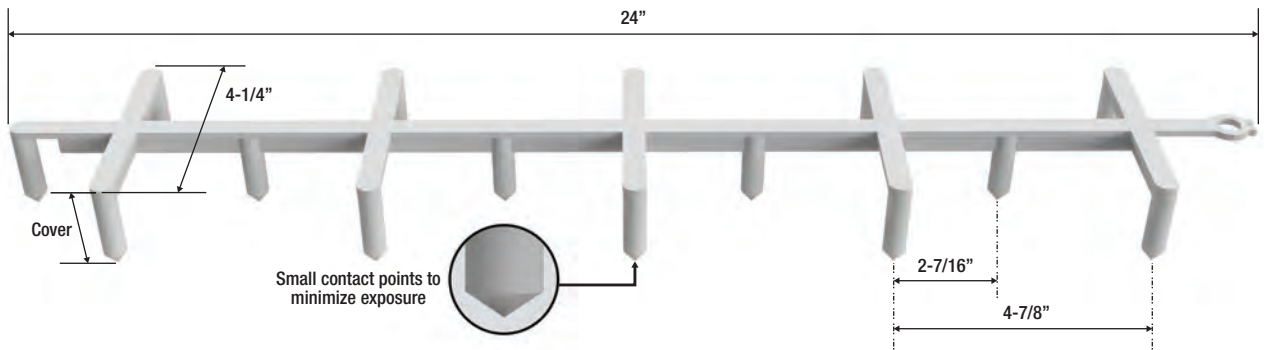
- 100% plastic construction, eliminating exposed metal that can rust
- Engineered design that reduces excess plastic and costs
- Staggered legs for stability
- **Patent Pending**



Part #	Cover/Size	Color	Feet /Ctn
PWSBL1	1"	Light Gray	420'
PWSBL112	1-1/2"	Light Gray	360'
PWSBL2	2"	Light Gray	260'
PWSBL212	2-1/2"	Light Gray	216'
PWSBL3	3"	Light Gray	180'

HEAVY DUTY PLASTIC SLAB BOLSTER

Heavy Duty Slab Bolster is a high-strength version of the Standard Slab Bolster designed for more demanding applications.



Part #	Cover/Size	Color	Feet /Ctn
PWSBH112	1-1/2"	Light Gray	250'
PWSBH2	2"	Light Gray	200'
PWSBH212	2-1/2"	Light Gray	160'
PWSBH3	3"	Light Gray	150'
PWSBH314	3-1/4"	Light Gray	110'